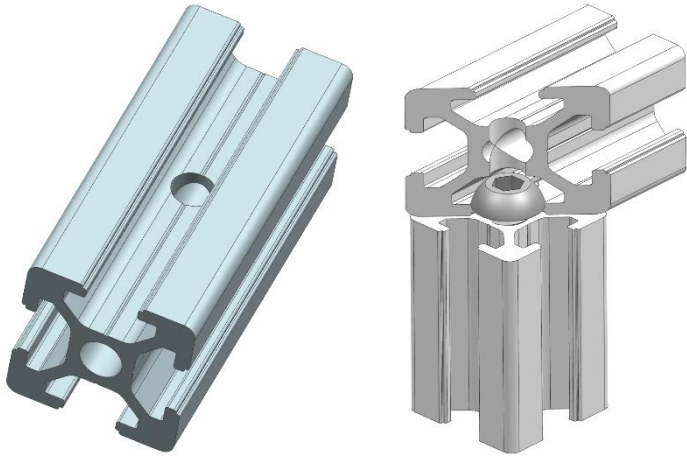
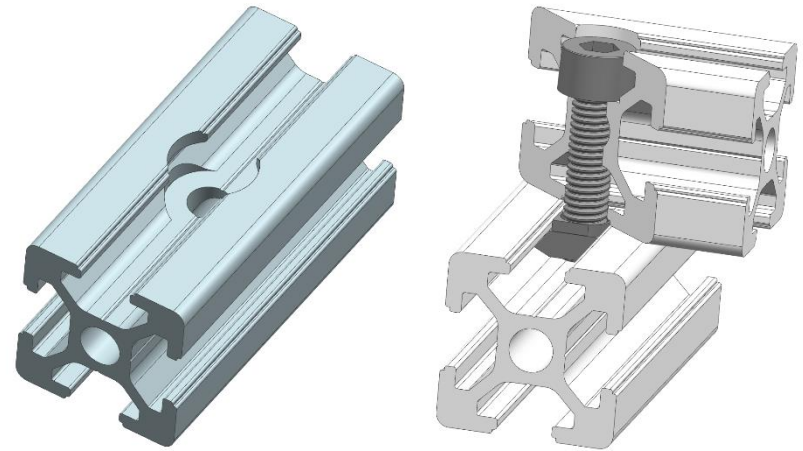


INTRODUCTION



Through hole

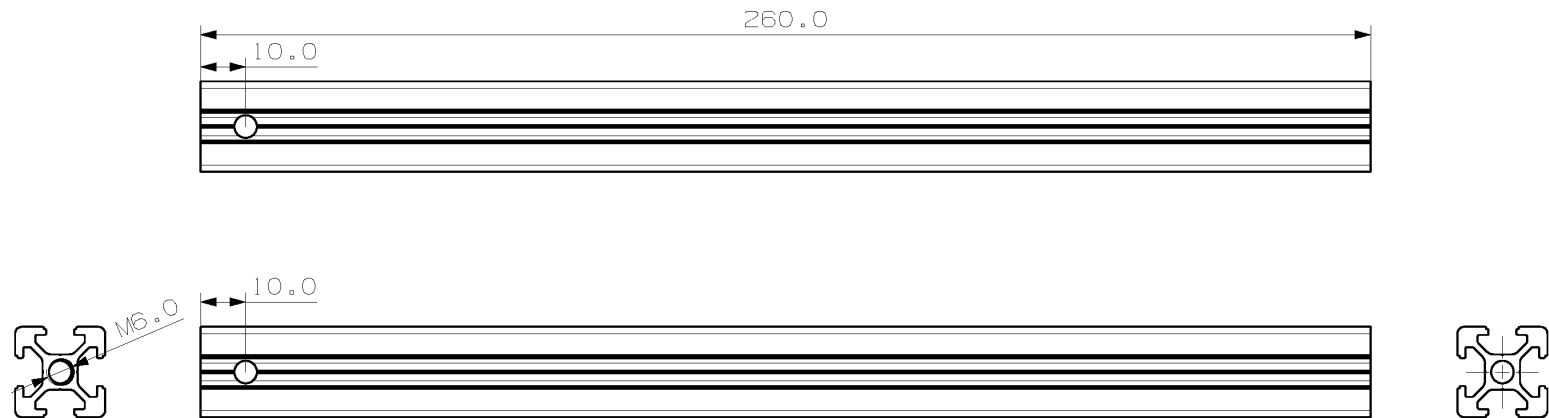
- Drill diameter: 5.5mm



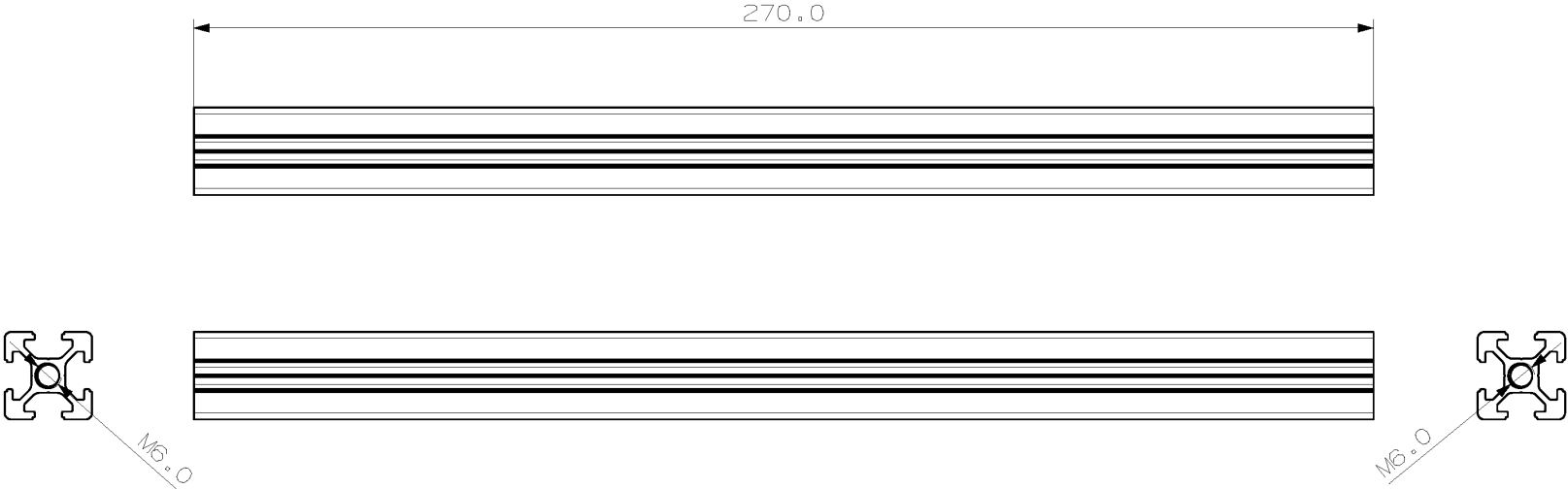
Counterbore

- Drill diameter: 5.5mm
- Countersunk diameter: 9.5mm
- Countersunk depth: 6.1mm

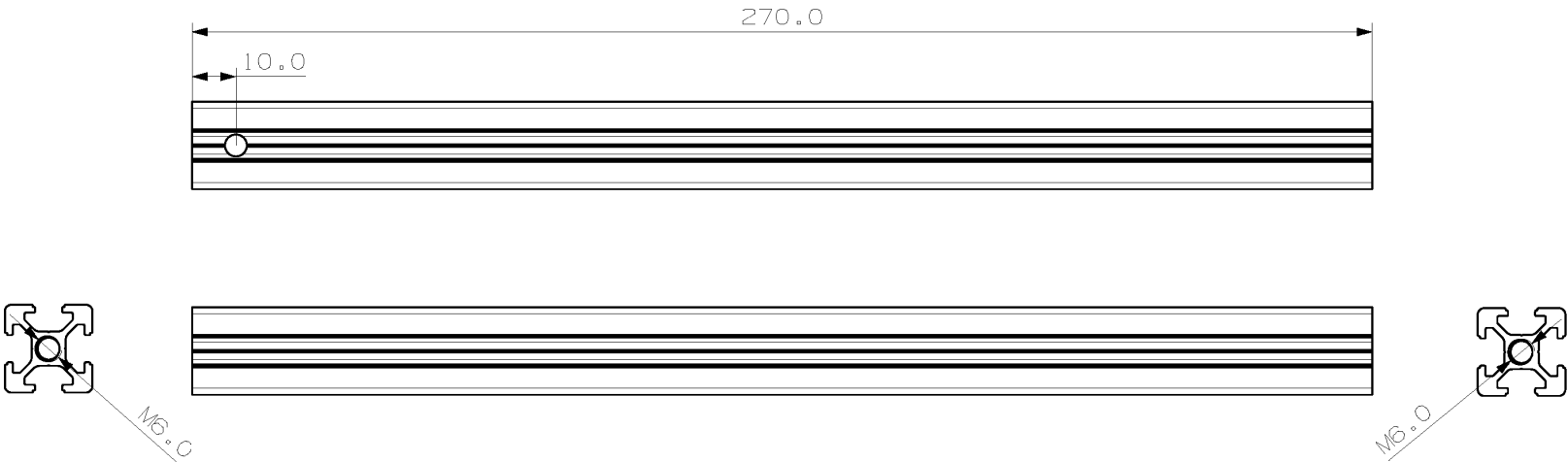
2. European standard 2020 aluminum profile **x 2**



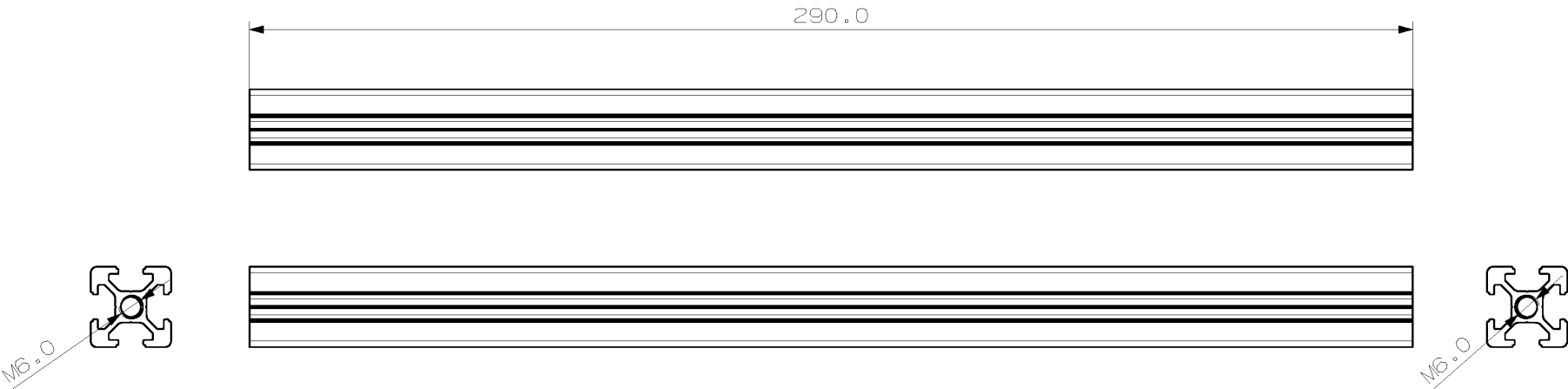
3. European standard 2020 aluminum profile x 3



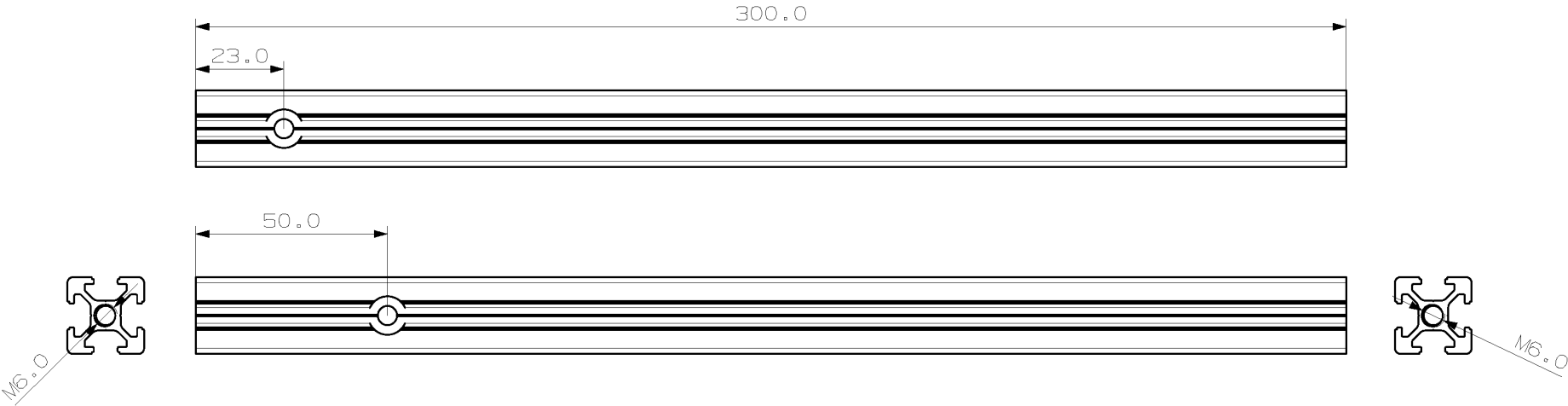
4. European standard 2020 aluminum profile x 2



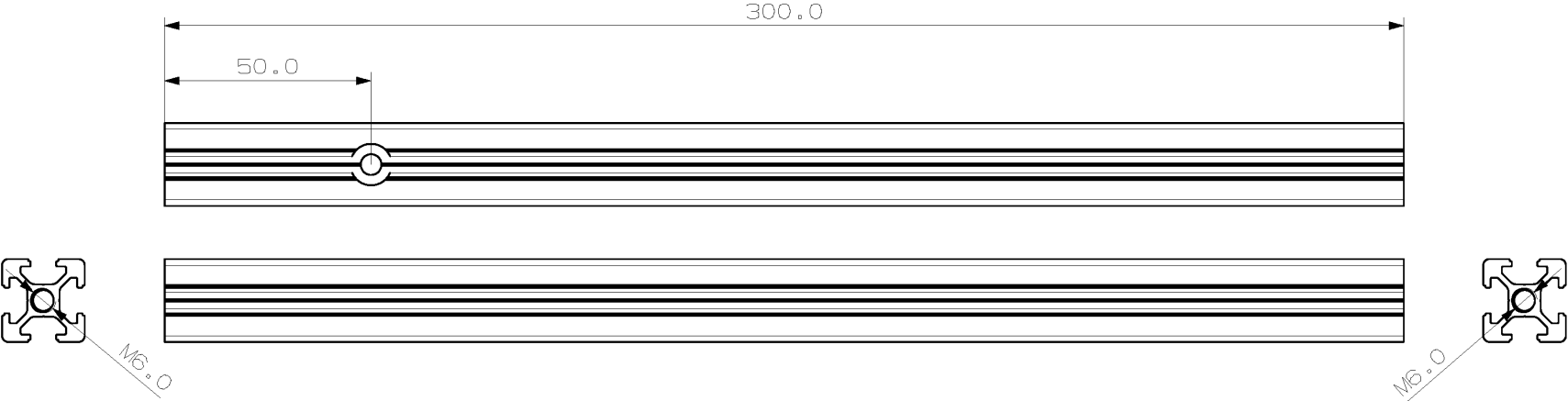
5. European standard 2020 aluminum profile **x 2**



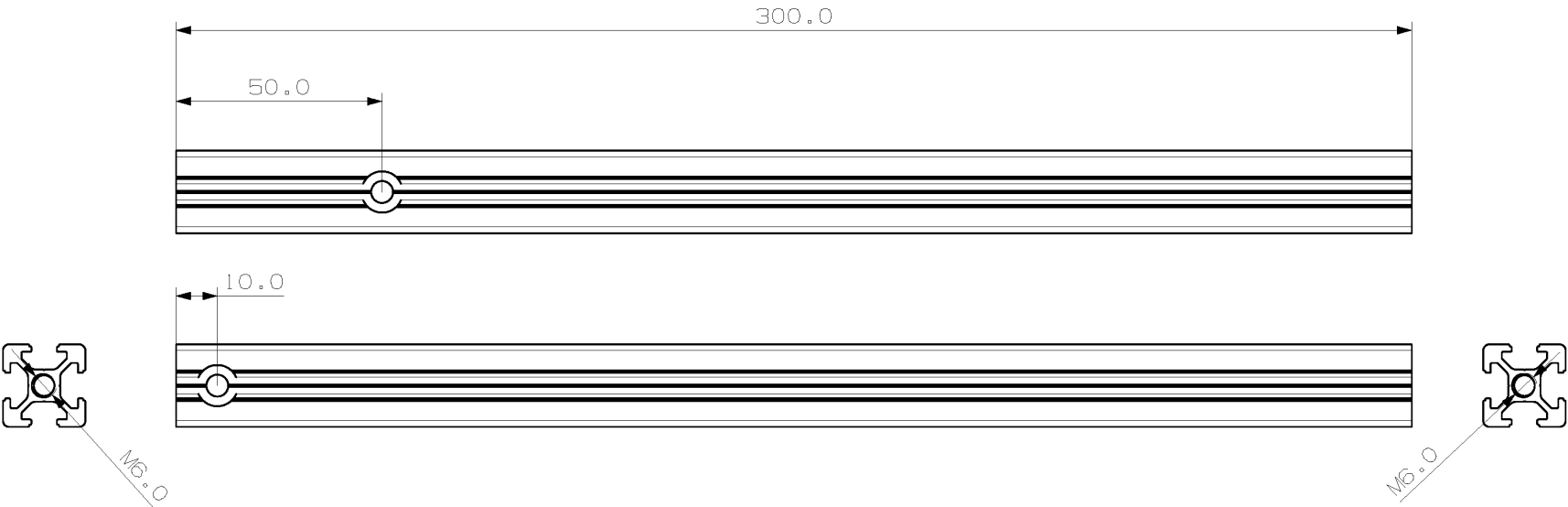
6. European standard 2020 aluminum profile **x 1**



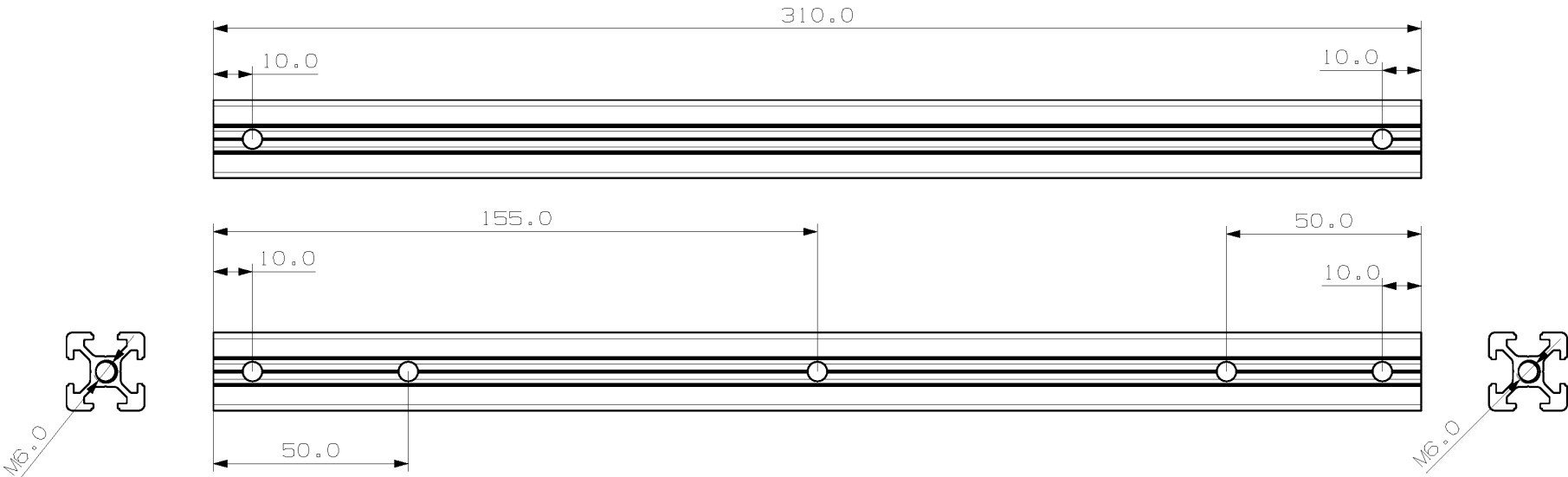
7. European standard 2020 aluminum profile x 1



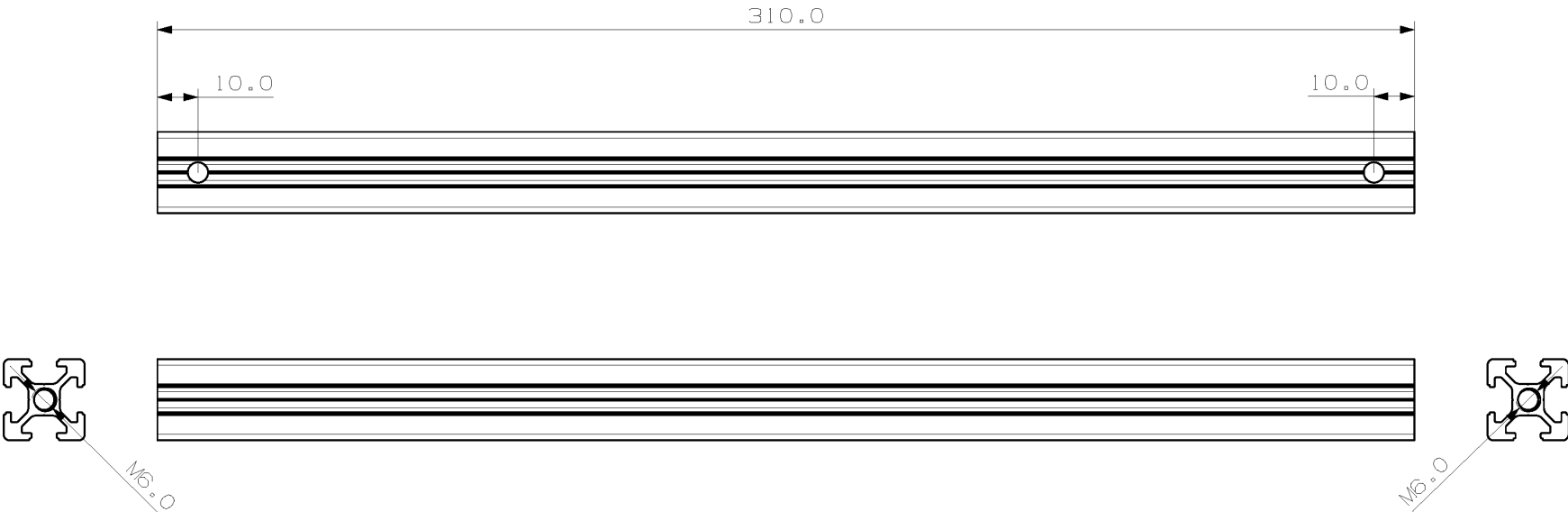
8. European standard 2020 aluminum profile x 1



9. European standard 2020 aluminum profile x 1



10. European standard 2020 aluminum profile x 1



11. European standard 2020 aluminum profile x 1

